

## Story of Saving People's Life

### ST FRANCIS CARE CENTER (SOUTH AFRICA)

Human Immunodeficiency Virus (HIV) is a highly prevalent disease. ST Francis Care Center is a HIV patients' hospice where patients await treatment. SHIQUY was applied to reduce viruses in the hospice to protect the patients. After a few months, patients are energized and motivated because allergic responses are reduced and indoor air became more fresh. SHIQUY will contribute to global health and go beyond normal paints.



## SHIQUY is Applicable to Flexible Materials

### EXPERIENCE SHIQUY FEATURES WITHOUT PAINTING



HANGING SHIQUY TAPESTRY IN A WASHROOM TO REMOVE BAD SMELLS



SHIQUY APPLIED ON EMERGENCY TENT FOR ANTI-VIRAL EFFECT DURING NATURAL DISASTER

# YAMATO CORPORATION

Contact us

4-12-11 Takahara  
Okinawa City 904-2171  
Tel: 098-931-1050  
Fax: 098-932-1714  
yamatocorporation.com



# SHIQUY

JAPANESE TRADITIONAL COATING MATERIAL



Anti-Viral & Anti-Bacterial



CO<sub>2</sub> Reduction



Remove Bad Smells



Humidity Control



Decompose VOC



Non-Flammable Materials



KANSAI PAINT

YAMATO  
CORPORATION





SHIQUY

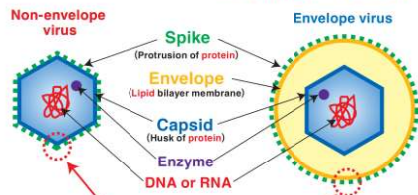


## SAFE NATURAL RAW MATERIAL

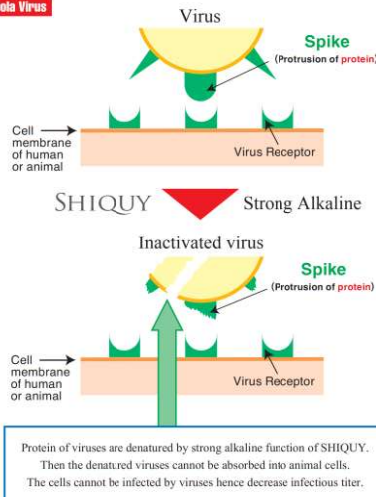
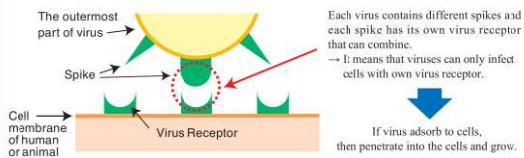
The main component of SHIQUY is Slaked Lime  $\text{Ca}(\text{OH})_2$  that is extracted from natural coral reef.

## Anti-Viral &amp; Anti-Bacterial

Virus be divided into two types, **Non-envelope** or **Envelope**



## How to absorb when a virus closes to a cell



## Verified Anti-viral Effect of SHIQUY With Leader of virus study



Department of Emerging Infectious Diseases  
Institute of Tropical Medicine  
National University Corporation,  
Nagasaki University  
**Professor Jiro Yasuda**

## Professor Yasuda's comments after the verification test

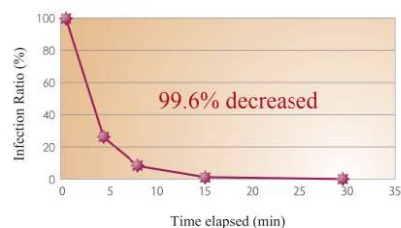
By the verification test this time, the high antivirus effect of SHIQUY was verified. I think it can be expected that the product will be widely utilized not only in medical institutions and health care facilities, but also in research institutions which deal with pathogenic microorganisms or in ordinary homes for the purpose of the improvement of hygiene environment.

In addition, I also think that it can be expected that you can easily and widely improve the safety & healthful environment by applying such a product to the places of very poor hygiene environment in developing countries in Africa or Asia.

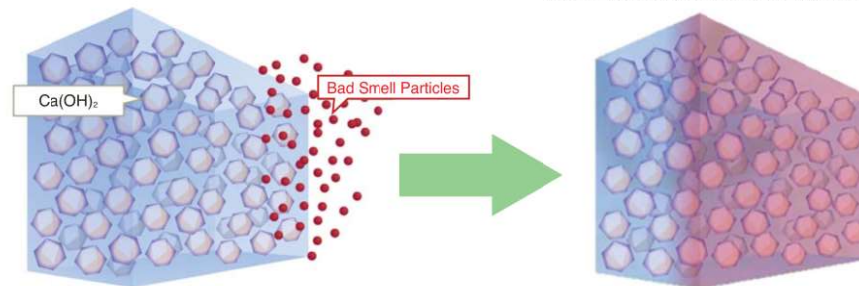
## Test viruses

Paint/Virus	Canine parvo virus (CPV)	Influenza virus H3N2 (IFV)	Vesicular Stomatitis virus (VSV)	Bovine Papular Stomatitis virus (BPSV)
KANSAI SHIQUY PAINT	Effective	Effective	Effective	Effective
Standard emulsion Paint	Non-effective	Non-effective	Non-effective	Non-effective
Standard Anti-Bacteria Paint	Non-effective	Non-effective	Non-effective	Non-effective
Similar Viruses	Norovirus, Rotavirus, Adenovirus, Poliovirus	SARS or MERS, Coronavirus, HIV virus, Ebola virus, Zika virus		Smallpox virus, Herpesvirus

## Anti-Viral Test Of Influenza Viruses (H5N1)



## Remove Bad Smells



$\text{Ca}(\text{OH})_2$  reacts with the particles and the heat removes bad smell components

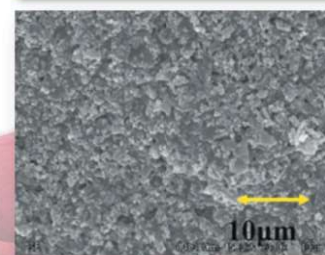
SMELLS	MAIN COMPONENTS
Sweat	AMMONIA, ACETIC ACID, ISOVALERIC ACID
Body odor	AMMONIA, ACETIC ACID, ISOVALERIC ACID, NONENAL
Excretion	AMMONIA, ACETIC ACID, HYDROGEN SULFIDE, METHYL MERCAPTAN, INDOLE
Cigarette	AMMONIA, ACETIC ACID, HYDROGEN SULFIDE, ACETALDEHYDE, PYRIDINE
Garbage	AMMONIA, HYDROGEN SULFIDE, METHYL MERCAPTAN, TRIMETHYLAMINE

	TIME ELAPSED	2hrs	24hrs
REDUCTION RATE	ASETIC ACID	99%	-
	ISOVALERIC ACID	98%	-
	INDOLE	97%	-
	FORMALDEHYDE	>99%	-
	NONENAL	90%	-
	HYDROGEN SULFIDE	31%	58%

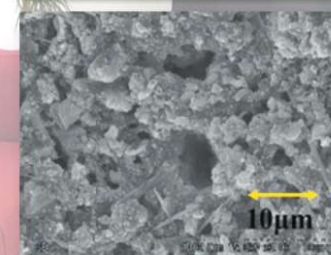
## CONCLUSION : SHIQUY REMOVES ODORS!

## Humidity Control

## Emulsion Paint (Flat Surface)



## SHIQUY (Porous Surface)



Porous surface of SHIQUY enlarges area exposed to the air. Humid air penetrate more into the porous surface than flat surface.